

foyers électriques
elektrische Kaminfeuer
fuegos eléctricos
elektrische haarden

traditional and contemporary electric fires





Burley's wide range of quality fires encompasses the timeless, classically designed traditional models through to the most contemporary wall-mounted fires with LED light source and unique hand-finished trims.

To find a **Burley** stockist near you, view our website www.burley.co.uk or speak to our friendly sales desk on 01572 756956.



La marque de foyers électriques **Burley** offre quelque chose pour tout le monde : la gamme comprend des poêles intemporels, classiques et traditionnels qui sont finis à la main, ainsi que des foyers plus contemporains et modernes avec éclairage LED.

Si vous cherchez un distributeur de **Burley** dans votre région, vous pouvez consulter le site web www.burley.co.uk, ou email sales@burley.co.uk



Burleys breites Angebot umfasst hochwertige elektrische Kaminfeuer von zeitloser, traditioneller Ausführung bis hin zu modern gestalteten Modellen mit Wandmontage, einzigartigen handgefertigten Verkleidungen und LED-Flammeneffekt.

Für Endverbraucher aus dem deutschsprachigen Raum Händlerverzeichnis bitte per E-Mail anfragen sales@burley.co.uk



La amplia gama de fuegos eléctricos **Burley** combina algo para todos los gustos y con la máxima calidad. Desde modelos clásicos y tradicionales hasta los modelos más modernos de colgar en pared que incorporan tecnología LED.

Contacte con nosotros en el email sales@burley.co.uk para poder facilitarles los datos de nuestro distribuidor en su zona.



De elektrische kwaliteitshaarden van **Burley** bieden voor elk wat wils: het assortiment omvat zowel tijdloze, klassieke en traditionele kachels die met de hand zijn afgewerkt als de meest eigentijdse, moderne hanghaarden met LED-verlichting.

Om een **Burley** -verdelers bij u in de buurt te vinden kan u de website www.burley.co.uk raadplegen, of email sales@burley.co.uk





Rotherby 531BR-R

Rotherby 531-R



531BL-R
3



531CH-R



Barleythorpe 560SS-R

Barleythorpe 560-R



560BR-R



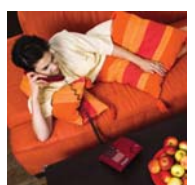
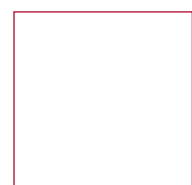
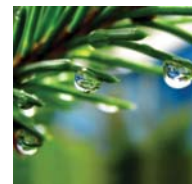
560BL-R



Caldecott 549-R



Aisby 536-R





Empingham 540-R

Empingham 540-R

Swinstead 535-R / 539-R

Without a trim to recess fully into a standard fireplace opening.

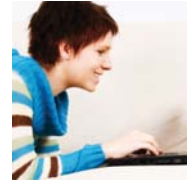
Sans garniture / Für Aufstellung in einer Nische vorgesehen / zonder trim / Se suministra sin remate para encastrar por completo en el hueco de una chimenea existente



535-R



539-R



Preston 548-R

Waltham 544-R



544BR-R



Waltham 544CH-R



Cottesmore 223



Halstead 292



Waverley 228



Halstead 293

baskets



Cottesmore 224



Cottesmore 224BL



Stamford 227



Hallaton 225

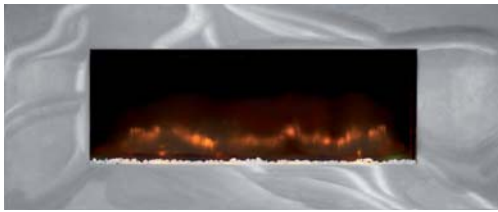


Lyddington Forge 101



Hambleton 590-R

Dynamic LED flame effect



Satin Trim 891



Orbital Trim 892



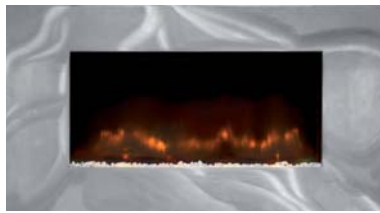
Casterton Trim 893



Contrast Trim 896

latest models

derniers modèles
neueste Modelle
Novedades
nieuwste modellen



Satin Trim 871



Orbital Trim 872



Casterton Trim 873



Contrast Trim 876

Ashwell 570-R





Luffenham 532-R



Luffenham 532-R



Glaston 503-R



Langham 504-R

Glass fascia / Glas / front en verre / glazen voorzijde / cristal





515M-S mirror front / frontale réfléchissante / Spiegelglas / espejo / spiegelende voorzijde

Ayston 515-S and 515M-S



515-S Glass fascia / Glas / front en verre / glazen voorzijde / cristal



537-R



537-R + 838 trim



Oakham 537-R

537-R



511-R + 811FBS

Whitwell 511-R



511-R + 811TTC



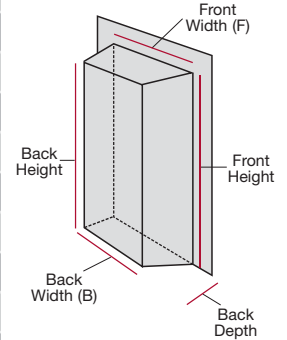
511-R + 811FBL



511-R + 811CH

Name	Model	Page	Finishes	Control	Thermostat	Fan heater	Flame type	Positioning	Fuel effect	Overall Aussermasse Total			Inset Einsatz / Inset Inbouw Empotrado		
										Height	Width	Depth	Height	Width	Depth
Lyddington	101	9	Bl	M	1kW & 2kW	U	F	L		572	560	254			
Weston	124	2	Bl	M	1kW & 2kW	V	F	L		620	525	325			
Cottesmore	223	8	Bl	M	1kW & 2kW	U	F	C		260	465	320			
Cottesmore	224	8	Bl / Br	M	1kW & 2kW	U	F	C		465	470	280			
Hallaton	225	9	Bl	M	1kW & 2kW	U	F	C		465	470	270			
Stamford	227	9	Po	M	1kW & 2kW	V	FJ	C		630	560	350			
Waverley	228	8	Po	M	1kW & 2kW	U	F	PL		260	460	320			
Halstead	292	8	Br	M	1kW & 2kW	U	I	C		250	395	330	250	F 385 B 275	250
Halstead	293	8	Bl	M	1kW & 2kW	U	I	C		250	395	330	250	F 385 B 275	250
Glaston	503-R	13	Bl + Ss	R	✓ 1.2kW	V	W	N		486	772	128			
Langham	504-R	13	Gl	R	✓ 1.2kW	V	W	N		486	772	128			
Whitwell	511-R large	15	Fbl / Ch	SRM	✓ 2kW	V	I	PL		812	958	280	580	660	240
Whitwell	511-R small	15	Fbs / Ttc	SRM	✓ 2kW	V	I	PL		662	803	270	580	660	240
Ayston	515-S	14	Gl / Mi	SR	✓ 2kW	V	W	PNH		600	940	165			
Rotherby	531-R	3	Bl / Br / Ch	RM	✓ 2kW	V	FI	C		580	506	165	552	F 364 B 325	57
Luffenham	532-R	12	Bl	RM	✓ 2kW	V	I	L		610	520	90	552	385	70
Swinstead	535-R	6	Bl	RM	✓ 2kW	V	I	C		555	400	180	548	F 385 B 290	95
Aisby	536-R	5	Ss	RM	✓ 2kW	V	FIJ	CP		610	520	170	548	F 385 B 290	95
Oakham	537-R	15	Bl + Ss	RM	✓ 2kW	V	FIW	CP		590	635	130	552	F 364 B 325	57
Oakham	537-R + 838 trim	15	Ch	RM	✓ 2kW	V	FIW	CP		590	635	155	552	F 364 B 325	57
Swinstead	539-R	6	Br	RM	✓ 2kW	V	I	C		555	400	180	548	F 385 B 290	95
Empingham	540-R	6	Br	RM	✓ 2kW	V	FIJ	C		610	520	157	548	F 385 B 290	95
Waltham	544-R	7	Br / Ch	RM	✓ 2kW	V	FIJ	C		610	520	190	548	F 385 B 290	95
Preston	548-R	7	Br	RM	✓ 2kW	V	FIJ	C		610	520	158	548	F 385 B 290	95
Caldecott	549-R	5	Champagne	RM	✓ 2kW	V	FIJ	PH		610	520	135	548	F 385 B 290	95
Barleythorpe	560-R	1 / 4	Bl / Br / Ss	RM	✓ 2kW	V	FIJ	C		610	520	158	548	F 385 B 290	95
Ashwell	570-R + 871	11	Satin Ss	R	✓ 2kW	LED	JW	N		539	986	126	520	686	70
Ashwell	570-R + 872	11	Orbital Ss	R	✓ 2kW	LED	JW	N		539	986	126	520	686	70
Ashwell	570-R + 873	11	Casterton Bl2	R	✓ 2kW	LED	JW	N		600	940	166	520	686	70
Ashwell	570-R + 876	11	Contrast Bl + Ss	R	✓ 2kW	LED	JW	N		600	940	126	520	686	70
Hambleton	590-R + 891	10	Satin Ss	R	✓ 2kW	LED	JW	N		539	1180	126	520	956	70
Hambleton	590-R + 892	10	Orbital Ss	R	✓ 2kW	LED	JW	N		539	1180	126	520	956	70
Hambleton	590-R + 893	10	Casterton Bl2	R	✓ 2kW	LED	JW	N		600	1110	166	520	956	70
Hambleton	590-R + 896	10	Contrast Bl + Ss	R	✓ 2kW	LED	JW	N		600	1110	126	520	956	70

Inset dimensions



All measurements are in millimetres.

Because our policy is one of constant development, details may vary slightly from those given in this publication.

Images remain copyright of Burley Appliances Ltd and may not be reproduced without permission.



C Coal Kohlen Charbons Kolen Antracita	J Semi inset Teil-einsatz Semi-insert Half inbouw Semi-empotrado	P Pebbles Kieselsteine Cailloux Steentjes Guijarros	Bl Black Schwarz Noir Zwart Negro	Mi Mirror Gespiegeld Miroir Gespiegeld Espejo	Fbs Small black Schwarz schmal Noir etroit Smal zwart Negro pequeño	Bl2 Bl with Ss fill Bl mit Ss Bl avec finition Ss Bl met Ss afwerking Bl con relleno en Ss
F Freestanding Freistehend Autonome Vrijstaand Autónomo	L Log effect Holzscheite Bûches Houtblokken Leños	R Remote control Fernbedienung Télécommande Afstandsbediening Mando distancia	Br Brass Messing Laiton Messing Latón	Po Polished Poliert Poli Gepolijst Pulido	Fbl Large black Schwarz breit Large noir Breed zwart Negro grande	
H Shells Muscheln Coquilles Schelpen Conchas	M Manual Handbediening Manuel Handbediening Manual	S Sensa-Switch U Flicker effect Gluteffekt Effet de scintillement Flukker effect Llama viva	Ch Chrome Chrom Chrome Chroom Cromo	Ss Brushed stainless steel Gebürsteter Stahl Acier brossé RVS Acero mate	Bl+Ss BL with optional SS trim Schwarz + Gebürsteter Stahl option Noir + option acier brossé Zwart + RVS optie Negro + Acero mate opcional	
I Inset Einsatz Insert Inbouw Fondo	N White chips Weiße Steine Pierres blanches Witte steentjes Guijarros blancos	V Virtual-flame W Wall mounted Wandmontage Foyer mural Wandmontage Para colgar en pared	Gl Glass Glas Verre Glas Cristal	Ttc Two tone chrome Zwei Ton Chrom Deux tons chromé Tweekleurig chroom cromo en dos tonos		

Stockist / Händler / Revendeur / Dealer / Distribuidor

Burley Appliances Limited
Lands End Way, Oakham
Rutland LE15 6RB
United Kingdom

Telephone (01572) 756956 Fax (01572) 724390
International +44 (0)1572 756956 Fax +44 (0)1572 724390
email: sales@burley.co.uk www.burley.co.uk