

**BAXI**

A passion for warmth



# relax

Choose a Baxi fire and you're choosing complete peace of mind.

The peace of mind of knowing that we have over 100 years experience at the forefront of the market. Our fires offer exceptional performance with superb economy and reliability. We take your peace of mind so seriously that we offer you the back up of heateam, the UK's largest dedicated force of specialist heating engineers, available 363 days of the year to provide you with support. You can be assured that millions of householders throughout the UK rely on us to keep them warm and cosy, whatever the weather.

Baxi. Keeping Britain Warm.



Inset fires 4-8



Outlet fires 9



Radiant fires 10-11



Electric fires 12-13



No chimney fires 14-15



Wall heaters 16-18



## decadent

- Available in chrome or brass finish
- Choice of deep or slimline coal bed
- Activeheat for rapid and even heat distribution
- Fireslide top control for effortless operation
- Suitable for all chimney or flue types
- No chimney options also available\*
- Heat output
  - Decadent 4.0kW
  - Decadent Slimline 3.5kW

\* See page 12



Decadent (with Slimline bed) in chrome.



Decadent (with deep bed) in brass.

## inset fires

Our attractive range of inset fires with classic styling will bring that warm homely feeling to any interior. Available with deep or slimline beds our inset fires are suitable for the majority of chimney or flue types and will make the ideal centrepiece for your room.



Minima (with slimline bed) in brushed chrome.

# minima

- Available in brushed chrome
- Choice of deep or slimline pebble bed
- Manual bottom control
- Suitable for all chimney or flue types
- Heat output
  - Minima 3.5kW
  - Minima Slimline 3.1kW





Minima (with deep bed) in brushed chrome.



Above: Heritage (with Slimline bed) in gold .  
Right: Heritage (with deep bed) in silver.



## heritage

- Deep coal bed version available in antique silver only
- Solid cast frame available in antique silver or gold slimline version
- Choice of deep or slimline coal bed
- Fireslide top control for effortless operation
- Suitable for all chimney or flue types
- Heat output  
Heritage 3.5kW  
Heritage Slimline 3.1kW



# outset fires

With its distinctive styling and exceptional efficiency, our Baroque Super outset fire is designed to suit any classic interior. The Baxi Baroque is the last word in luxury with lavish use of brass detailing and intricate fretwork, it is also fitted with the unique Emberlite underbed illumination that can be used independently of heat.



Baroque Super.

## baroque

- Beautiful coal bed with outstanding flame picture
- Side control
- Suitable for all chimney or flue types
- Heat output  
Baroque Super 3.4kW

# radiant fires

Our range of highly efficient radiant fires gives a superb level of performance - and every model is tremendously economical to run.



Brava in teak.

## brava

- Choice of teak or mahogany effect panels
- Easy to operate top control
- Suitable for all chimney or flue types
- Heat output  
Brava 4.0kW

## charm

- Choice of teak or mahogany panels
- Easy to operate top control
- Suitable for all chimney or flue types
- Heat output  
Charm 4.0kW



## esquire

- Available in olive bronze finish
- Easy to operate top control
- Electronic ignition also available
- Suitable for all chimney or flue types
- Heat output  
Esquire 4.0kW



Top: Charm in mahogany.  
Bottom: Esquire in olive bronze.



Above: Decadent electric in chrome.

Right: Decadent electric in brass.



## decadent

- Available in chrome or brass finish
- Realistic flame effect
- Flame effect can be used independently of heat
- Spacer kit available for flat wall mounting
- Heat output  
Decadent Electric 2.0kW

# electric fires

Baxi electric fires bring that warm and cosy feel to homes with no chimney. With a realistic flame effect that can be used independently of heat you can create the warmth and glow of a real fire giving a true centrepiece for any room.



Minima Electric.

## minima

- Available in brushed chrome
- Realistic flame effect
- Flame effect can be used independently of heat
- Spacer kit available for flat wall mounting
- Heat output  
Minima Electric 2.0kW





Decadent Balanced Flue in brass.

# no chimney fires

Now even homes without a chimney can bask in the warm glow of realistic flickering flames.

Specially designed for homes without chimneys, our Decadent fire enables practically any home to enjoy the comfort and homely feel created by a gas fire.



Decadent Balanced Flue in chrome.

## decadent balanced flue

- Available in chrome or brass finish
- Easy to operate high level control
- Beautiful new coal bed
- Suitable for homes with no chimney
- Heat output

Decadent Balanced Flue 2.7kW



Brazilia F 5 in beige.

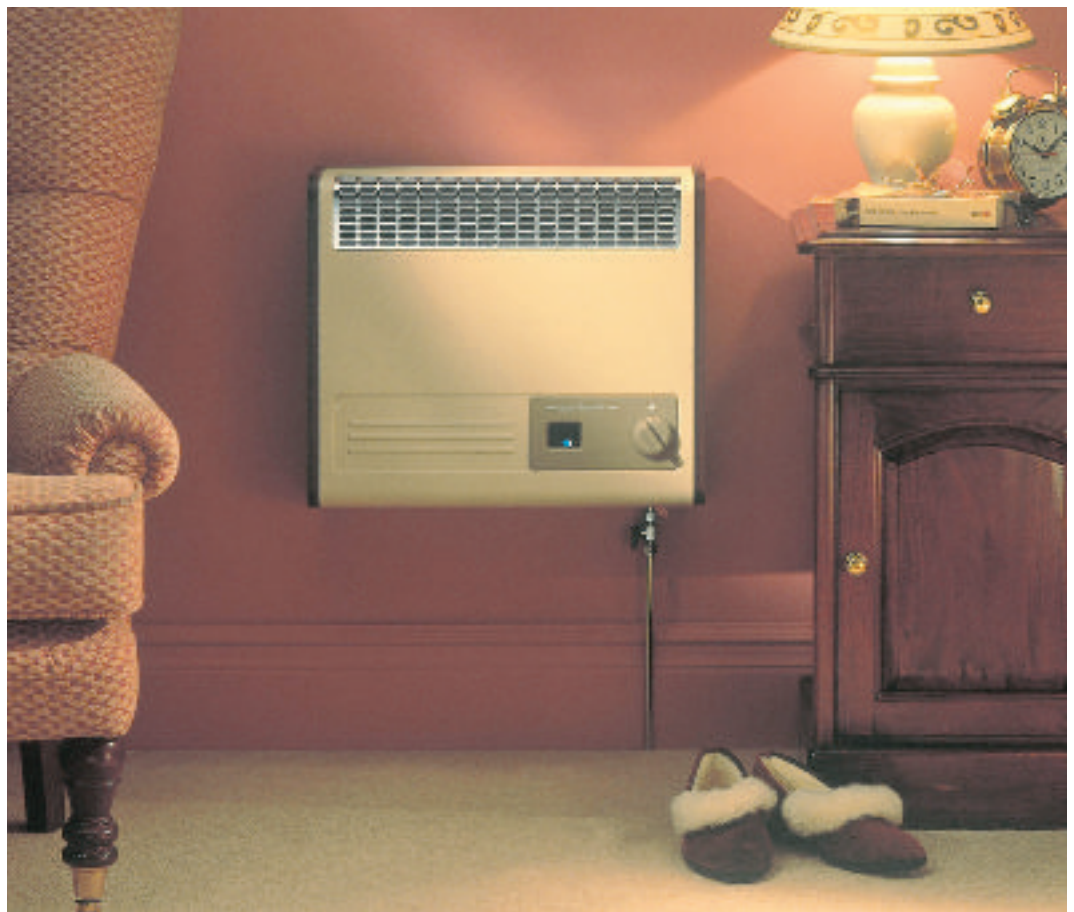
## brazilia F 5

- Available in beige finish
- No chimney/flue required
- Optional special needs adaptor available
- Optional safety guard
- Heat output  
Brazilia F 5-1.5kW



# wall heaters

The Baxi Brazilia range of heaters is the ideal way to banish the chill from any cold spots in your home. For added peace of mind an optional safety guard is available to prevent children from touching the hot heat outlet. An easy control adaptor is also available for those with special needs. Highly efficient, extremely reliable and totally versatile, Brazilia wall heaters are perfect in any setting.



Brazilia F 5S in beige.

## brazilia F 5S

- Available in beige with mahogany or oak effect panels
- No chimney/flue required
- Optional special needs adaptor available
- Optional safety guard
- Heat output  
Brazilia F 5S-1.5kW





Brazilia F 8S in beige.

## brazilia F 8S

- Available in beige with mahogany or oak effect panels
- No chimney/flue required
- Optional special needs adaptor available
- Optional safety guard
- Heat output  
Brazilia F 8S-2.3kW

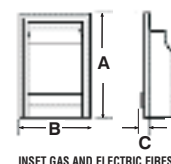
## brazilia F 8ST

- Available in beige with oak effect side panels
- No chimney/flue required
- Optional special needs adaptor available
- Optional safety guard
- Thermostatic 'comfort control' system
- Heat output  
Brazilia F 8ST-2.3kW

		DECADENT	DECADENT SLIMLINE	MINIMA	MINIMA SLIMLINE	HERITAGE	HERITAGE SLIMLINE	BAROQUE SUPER	BRAVA	CHARM	ESQUIRE /ELECTRONIC	DECADENT ELECTRIC	MINIMA ELECTRIC	DECADENT BALANCED FLUE	BRAZILIA F 5	BRAZILIA F 6S	BRAZILIA F 6S	BRAZILIA F 6ST	
HEAT OUTPUT	MIN	1.5 NG 2.5 LPG	1.4 NG 2.4 LPG	0.9 NG 2.1 LPG	1.2 NG 1.6 LPG	1.1 NG 2.2 LPG	1.4 NG 2.3 LPG	1.2 NG	1.0 NG	1.0 NG	1.0 NG	1.0kW	1.0kW	1.1 NG	0.6 NG 0.6 LPG	0.6 NG 0.6 LPG	0.8 NG 0.8 LPG	0.8 NG 0.8 LPG	
	MAX	4.0 NG 4.1 LPG	3.5 NG 3.5 LPG	3.5 NG 3.7 LPG	3.0 NG 3.1 LPG	3.5 NG 3.7 LPG	3.1 NG 3.3 LPG	3.4 NG	4.0 NG	4.0 NG	4.0 NG	2.0kW	2.0kW	2.7 NG	1.5 NG 1.5 LPG	1.5 NG 1.5 LPG	2.3 NG 2.3 LPG	2.3 NG 2.3 LPG	
HEAT INPUT	MIN	2.7 NG 4.3 LPG	2.7 NG 4.3 LPG	2.3 NG 4.0 LPG	2.3 NG 3.8 LPG	2.7 NG 4.3 LPG	2.7 NG 4.3 LPG	2.1 NG	1.57 NG	1.57 NG	1.57 NG	1.0kW	1.0kW	1.5 NG	0.9 NG 0.9 LPG	0.9 NG 0.9 LPG	1.3 NG 1.3 LPG	1.3 NG 1.3 LPG	
	MAX	6.85 NG 6.7 LPG	6.0 NG 6.1 LPG	6.8 NG 6.7 LPG	6.0 NG 6.1 LPG	6.8 NG 6.7 LPG	6.0 NG 6.1 LPG	5.6 NG	5.6 NG	5.6 NG	5.6 NG	2.0kW	2.0kW	3.7 NG	2.1 NG 2.1 LPG	2.1 NG 2.1 LPG	3.1 NG 3.1 LPG	3.1 NG 3.1 LPG	
HEAT TYPE		RC	RC	R	R	R	R	RC	RC	RC	RC	C	C	RC	C	C	C	C	
CONTROL TYPE & POSITION		FireSlide® Top Control	FireSlide® Top Control	Manual	Manual	FireSlide® Top Control	FireSlide® Top Control	Side Control	Top Control	Top Control	Top Control/ Electronic Ignition	Top concealed under canopy	Top concealed under canopy	Top Control	Bottom Control	Bottom Control	Bottom Control	Thermo- static	
SAFETY FEATURES	OXYSAFE® SYSTEM	✓	✓	✓	✓	✓	✓	✓	✓	✓	✓	-	-	-	-	-	-	-	
	FLAME SUPERVISION DEVICE	✓	✓	✓	✓	✓	✓	✓	✓	✓	✓	-	-	✓	✓	✓	✓	✓	
CHIMNEY / FLUE TYPE	BRICK	✓	✓	✓	✓	✓	✓	✓	✓	✓	✓	✓	✓	-	-	-	-	-	
	PRE-FAB	✦	✓	✦	✓	✦	✓	✓	✓	✓	✓	✓	✓	-	-	-	-	-	
	PRE-CAST	✓	✓	✓	✓	✓	✓	✓	✓	✓	✓	✓	✓	-	-	-	-	-	
	NO CHIMNEY	✗	✗	✗	✗	✗	✗	✗	✗	✗	✗	✓	✓	✓	✓	✓	✓	✓	
MOUNTING HEARTH / WALL		H&W●	H&W●	H&W●	H&W●	H&W●	H&W●	H&W●	H&W	H&W	H&W	H	H	H	W	W	W	W	
FIREPLACE OPENINGS REQUIRED (mm)	BRICK BUILT		HEIGHT (mm)	555-575	540-575	555-575	535-575	555-575	535-575	510-560	544-610	544-610	544-610	555-590	555-590	-	-	-	-
	BRICK BUILT		WIDTH (mm)	405-457	335-435	405-457	335-435	405-457	335-435	305-440	305-440	305-440	305-440	390-450	390-450	-	-	-	-
	BRICK BUILT		DEPTH (min mm)	285	235	285	200	285	200	100	165	165	165	75	75	-	-	-	-
	PREFAB FLUE		HEIGHT (mm)	555-575	540-575	555-575	535-575	555-575	535-575	510-560	544-610	544-610	544-610	555-590	555-590	-	-	-	-
	PREFAB FLUE		WIDTH (mm)	405-457	335-435	405-457	335-435	405-457	335-435	305-440	380-440	380-440	380-440	390-450	390-450	-	-	-	-
	PREFAB FLUE		DEPTH (min mm)	305	165	305	150	305	150	100	165	165	165	75	75	-	-	-	-
	PRE-CAST FLUE		HEIGHT (mm)	555-575	540-575	555-575	535-575	555-575	535-575	510-560	544-610	544-610	544-610	555-590	555-590	-	-	-	-
	PRE-CAST FLUE		WIDTH (mm)	450	335-435	450	335-435	335-435	335-435	305-440	305-440	305-440	305-440	390-450	390-450	-	-	-	-
	PRE-CAST FLUE		DEPTH (min mm)	240	138	240	120	120	120	100	115	115	115	75	75	-	-	-	-
CLEARANCE REQUIRED FROM CASE (mm)		ABOVE (mm)	135	120	161	165	122	112	100	90	90	90	-	-	780	140	140	89	89
CLEARANCE REQUIRED FROM CASE (mm)		SIDE (TO CORNER WALL) (mm)	108	100	125	100	108	100	100	50	50	50	-	-	102	-	-	-	-
CLEARANCE REQUIRED FROM CASE (mm)		BELOW (IF WALL MOUNTED) (mm)	100	72	100	72	100	72	75	50	50	50	-	-	-	72	72	72	72
APPLIANCE DIMENSIONS (mm)		HEIGHT (A) (mm)	625	630	599	585	638	638	689	610	610	609	623	605	637	394	394	430	430
APPLIANCE DIMENSIONS (mm)		WIDTH (B) (mm)	529	529	492	450	515	515	703	713	713	708	529	490	545	426	450	516	516
APPLIANCE DIMENSIONS (mm)		PROJECTION INTO THE ROOM (C) (mm)	92	77	86	86	51	51	323	177	177	177	78	83	133	126	128	152	152

NOTES

- ✦ Due to the sheer number of varying flue boxes it is not possible to advise on which fires are suitable until the existing fire has been removed.
- We do recommend the use of a hearth.
- R Radiant Heat
- C Convected Heat
- RC Radiant & Convected Heat



# BAXI

A division of BAXI GROUP

For details and to view the Baxi collection phone: 0845 601 0836  
or visit our website [www.firesandstoves.com](http://www.firesandstoves.com)

## Telephone Carelines

Sales 0870 606 1067

Technical Advice & Service 0870 606 1065

Switchboard 0870 606 1064

Spares 0870 600 0454

Fax 0121 373 8181



All Baxi fires comply fully with minimum efficiencies  
as outlined in the new part L regulations

The service division

**heateam**  
the heat experts

heateam is a Baxi Heating UK operation dedicated to providing state-of-the-art customer service. Its role is to support our products long after they leave our factory. Our lines are open 363 days a year and our team of CORGI registered gas engineers are on hand 6 days a week, to provide support. In the unlikely event that there are any mechanical problems with your fire while it is still in warranty they will come out to rectify the problem free of charge.\* heateam also offer the facility to register your guarantee and extend the warranty on any of our gas products for your added peace of mind.  
Telephone 08706 090081 or visit [www.heateam.co.uk](http://www.heateam.co.uk)

As with all products from Baxi Fires Division you can be assured of the following:

### Quality

Unlike most other manufacturers, every single fire manufactured at our purpose built factory in Erdington is gas and leak tested for your peace of mind. Our products are manufactured in accordance with the internationally recognised Quality Management System Standard ISO 900:2001.

### Assured safety

All our fires are fitted with a flame safety device which cuts off the gas in the unlikely event that the pilot flame is blown out, plus our Oxysafe system which monitors the level of oxygen in the room and cuts off the fire if there is insufficient oxygen in the room.

### After sales service

We are so sure of the quality of our fires that in the unlikely event of any mechanical problems during the warranty period we will send out one of our expert heateam engineers to rectify the problem free of charge.\*



### General notes

All gas appliances must be installed by a competent CORGI Registered Installer and in accordance with the manufacturer's installation instructions and they should not be fitted directly onto a carpet or floor of combustible materials.

Please note that certain parts of the appliance will become hot.

A suitable guard is therefore recommended where the very young or infirm are concerned.

Our policy is one of continual improvement and development. The right to change specification without prior notice is reserved.

Reproduction of colours is as accurate as photographic and printing processes will allow.

The statutory rights of the consumer are not affected.

\*No liability is accepted for problems caused by poor installation or misuse of the product.