

THE
GALLERY
COLLECTION

2006 - 2007

FIREBASKETS & STOVES



THE MATRIX *black*

MANTEL: MODENA 55" AGEAN LIMESTONE

SLIPS: GRANITE

HEARTH: 54" SLABBED GRANITE FOR SOLID FUEL

CHAMBER: BLACK REEDED FIREBOARD



WELCOME TO THE GALLERY COLLECTION

The Gallery Collection presents an extensive range of traditional and contemporary fireplaces, combining supreme craftsmanship, quality materials and elegance in design.

The brochure chapters are arranged by the style of firebaskets available, from contemporary to the more traditional. We pride ourselves on the breadth and variety of choice of our products and are confident there is something to suit all tastes and budgets.

Each firebasket is shown with a mantel and slip set or cast iron fascia, with mantel surround and hearth options given in the text below each fireplace pictured. In many cases a chamber lining is used to finish off the look.

Also featured in this brochure is a range of efficient cast iron stoves. The Firefox and the Tiger in all its variations offer a compact range of sizes and options for gas or multi fuel burning.

Please check the selection grid at the back of the brochure or ask your retailer to help determine what products suit your particular circumstances. If your preferred combination of products is not shown, it does not mean they do not work together. There are many thousands of permutations and we are sure one of these will

CONTENTS

02 CONTEMPORARY	Select from a extensive range of contemporary firebaskets.
11 TRADITIONAL	This collection draws inspiration from various eras and styles.
19 STOVES	Quality cast iron stoves for multi fuel or gas applications.
21 ACCESSORIES	A comprehensive collection of quality fire tools to complement your fireplace.
22 STONE MANTELS	A view of the whole range of limestone and marble Firestone mantels.
23 FIRE OPTIONS	Details of fires with advice on flue types.
25 SELECTION GRIDS	Dimensions of the complete range at a glance.
27 CARE & MAINTENANCE	Helpful information about your new Gallery fireplace.

Front cover image: Large Nexus Firebasket with chrome finish, Brompton 56" Agean Limestone mantel & Granite slips and hearth.

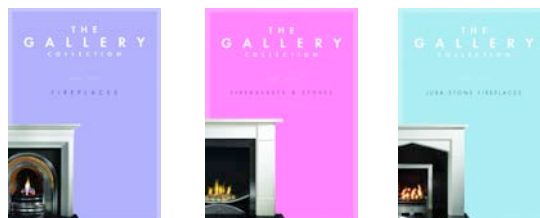
Back cover image: The Zen firebasket with back and chrome finish, Genoa 44" Agean Limestone mantel & Slate slips and hearth.

THE GALLERY COLLECTION

Our desire is to provide you with a superb choice of fireplaces skillfully made with high quality materials, all fitted in your home by reputable retailers so you can enjoy the experience of buying and owning your individual fireplace.

A beautiful Fireplace can add so much to the look and value of your home and is often regarded as a style statement. However, never forget that essentially they are complex working appliances that must be treated with care and installed with caution. This is why we believe it is essential that our products are installed by a properly qualified fitter. The Gallery Collection is distributed by a professional group of companies throughout the UK, whose aim, first and foremost, is to provide high quality service.

Original Gallery Collection products are  (anti copying in design) registered, and are therefore protected by UK design right. We will not compromise on quality, neither should you, so in order for you to receive products manufactured to the highest possible standards, insist only on a genuine "Gallery Collection" Fireplace.



The Gallery Collection suite of brochures comprise:

FIREPLACES This brochure offers a comprehensive range of cast iron inserts and natural stone or wooden mantels. From cottage bedrooms to elegant drawing rooms, farmhouses to flats, we have fires and fireplaces to complement your lifestyle.

FIREBASKETS & STOVES We are particularly proud of the diversity of traditional and contemporary firebasket styles we offer. Also available is a wide range of gas, solid fuel or electric options to complement your basket. Our excellent range of stoves offers great heat output with rustic style, these classic designs also offer the option for both solid fuel or gas use.

JURA-STONE SUITES & FIREPLACES A natural alternative to existing man-made options, Jura-Stone is hand carved natural marble coated with a specially developed finish which gives a consistent, real stone appearance. These durable and versatile fireplaces are available in several elegant modern and traditional designs.

CONTEMPORARY BASKETS

Sleek clean lines characterise our contemporary basket range. These stylish and functional baskets complement many living space designs.



THE ASTRA *chrome finish*

MANTEL: GENOA 44" AGEAN LIMESTONE

SLIPS: SLATE

HEARTH: 48" SLATE

CHAMBER: BLACK REEDED FIREBOARD

Shelf: 44"



THE NEON NO BACK *full polished*
MANTEL: GENOA 44" AGEAN LIMESTONE
FASCIA: SHIRE NEWTON *highlight*
HEARTH: 48" SLATE

Shelf: 48"



THE NEON WITH BACK *full polished*
MANTEL: HENLOW 48" AGEAN LIMESTONE
FIRE: 2kW ELECTRIC
FASCIA: SHIRE NEWTON *highlight*
HEARTH: 48" SLATE

Shelf: 51"



THE ELAN NO BACK *full polished*
MANTEL: BROMPTON 51" AGEAN LIMESTONE
SLIPS: GRANITE
HEARTH: 51" GRANITE

Shelf: 54"



THE ELAN WITH BACK *full polished*
MANTEL: SIENNA 54" AGEAN LIMESTONE
SLIPS: SLATE
HEARTH: 54" LIMESTONE

CONTEMPORARY BASKETS

Shelf: 49"



THE KRYPTON WITH BACK *full polished*
MANTEL: PICCOLO 49" AGEAN LIMESTONE
SLIPS: SLATE
HEARTH: 54" LIMESTONE WITH LIMESTONE PLINTH

Shelf: 54"



THE MATRIX *full polished*
MANTEL: WOBURN 54" AGEAN LIMESTONE
SLIPS: SLATE
HEARTH: 54" SLATE

Shelf: 50"



THE ZEN *chrome finish*
MANTEL: LYON 50" AGEAN LIMESTONE
SLIPS: LIMESTONE
HEARTH: 51" SLATE WITH SLATE PLINTH

Shelf: 51"



THE LIBERTY *chrome finish*
MANTEL: SIENNA 51" AGEAN LIMESTONE
SLIPS: SLATE
HEARTH: 51" SLATE



THE SYMPHONY *highlight*
MANTEL: MARSEILLES 52" AGEAN LIMESTONE
FASCIA: SHIRE NEWTON *highlight*
HEARTH: 54" LIMESTONE WITH LIMESTONE PLINTH
CHAMBER: BLACK REEDED FIREBOARD

CONTEMPORARY BASKETS

Shelf: 50"



THE SYMPHONY *highlight*
MANTEL: LYON 50" AGEAN LIMESTONE
FASCIA: SHIRE NEWTON *full polished*
HEARTH: 51" GRANITE

Shelf: 52"



THE CANTILEVER *highlight*
MANTEL: MARSEILLES 52" AGEAN LIMESTONE
FASCIA: SHIRE NEWTON *highlight*
HEARTH: 54" GRANITE

Shelf: 48"



THE LARGE NEXUS *black*
MANTEL: MILANO 48" AGEAN LIMESTONE
HEARTH: 54" GRANITE

Shelf: 55"



THE SMALL NEXUS *chrome finish*
MANTEL: ASQUITH 55" AGEAN LIMESTONE
FASCIA: VISTA *highlight*
HEARTH: 54" GRANITE

Shelf: 44"



THE ASTRA *chrome finish*
MANTEL: GENOA 44" AGEAN LIMESTONE
SLIPS: LIMESTONE
HEARTH: 48" SLATE

Shelf: 56"



THE PULSE *chrome finish*
MANTEL: BROMPTON 56" AGEAN LIMESTONE
FASCIA: VISTA *highlight*
HEARTH: 54" SLATE

Shelf: 44"



THE BARBICAN *chrome finish*
MANTEL: GENOA 44" AGEAN LIMESTONE
FASCIA: SHIRE NEWTON *highlight*
HEARTH: 48" SLATE

Shelf: 52"



THE CUBE *chrome finish*
MANTEL: MARSEILLES 52" AGEAN LIMESTONE
SLIPS: SLATE
HEARTH: 54" SLATE WITH SLATE PLINTH

CONTEMPORARY BASKETS

Within this range the Zen, Barbican, Cube, Symphony, Astra, Liberty and Pulse firebaskets are designed for decorative gas fires only, the remaining baskets can be used for gas as well as being great for burning solid fuel. You can personalise your decorative gas fire by selecting from a range of coal, pebble or several wood styled ceramics as shown below.



PEBBLES



COAL



FIREWOOD



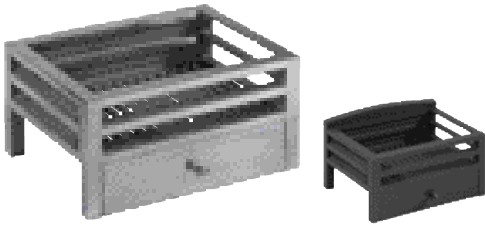
DRIFTWOOD



CHARCOAL

THE BARBICAN *chrome finish*
MANTEL: MILANO 48" AGEAN LIMESTONE
FASCIA: VISTA *full polished*
HEARTH: 54" SLATE
CHAMBER: BLACK REEDED FIREBOARD





THE NEON

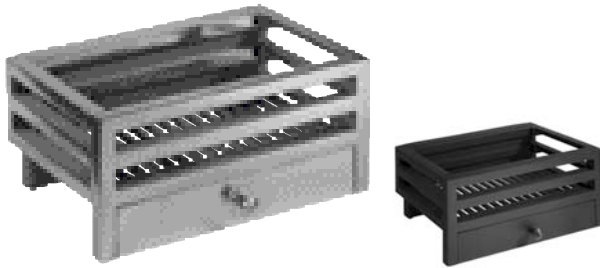
FINISHES: POLISHED & BLACK
 NO BACK: 375mm (W) x 285mm (D) x 190mm (H)
 WITH BACK: 375mm (W) x 285mm (D) x 23mm (H)



Shown without back

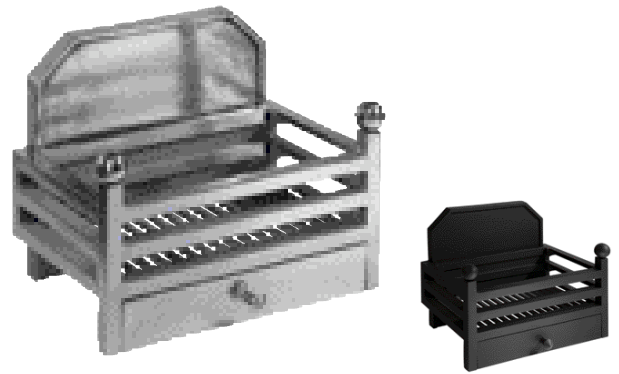
THE KRYPTON

FINISHES: POLISHED & BLACK
 NO BACK: 535mm (W) x 230mm (D) x 190mm (H)
 WITH BACK: 535mm (W) x 230mm (D) x 265mm (H)



THE ELAN NO BACK

FINISHES: POLISHED & BLACK
 440mm (W) x 300mm (D) x 210mm (H)



THE ELAN WITH BACK

FINISHES: POLISHED & BLACK
 455mm (W) x 300mm (D) x 385mm (H)



THE MATRIX

FINISHES: POLISHED & BLACK
 515mm (W) x 300mm (D) x 395mm (H)



THE CANTILEVER

FINISH: HIGHLIGHT
 555mm (W) x 245mm (D) x 320mm (H)

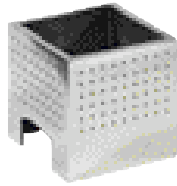
CONTEMPORARY BASKETS



THE BARBICAN

FINISH: CHROME

395mm (W) x 315mm (D) x 305mm (H)



THE CUBE

FINISH: CHROME

265mm (W) x 265mm (D) x 265mm (H)



THE ASTRA

FINISH: CHROME

430mm (W) x 225mm (D) x 290mm (H)



THE PULSE

FINISH: CHROME

455mm (W) x 285mm (D) x 250mm (H)



THE ZEN

FINISHES: CHROME & BLACK

NO BACK: 495mm (W) x 375mm (D) x 140mm (H)

WITH BACK: 495mm (W) x 375mm (D) x 240mm (H)

Shown without back



THE SYMPHONY

FINISH: HIGHLIGHT

510mm (W) x 255mm (D) x 215mm (H)



THE LIBERTY

FINISH: CHROME

570mm (W) x 410mm (D) x 365mm (H)



Shown in gas fire position.



Shown in solid fuel position.

THE SMALL NEXUS

FINISHES: CHROME & BLACK

GAS FIRE POSITION: 610mm (W) x 315mm (D) x 190mm (H)

SOLID FUEL POSITION: 610mm (W) x 315mm (D) x 120mm (H)



Shown in gas fire position.



Shown in solid fuel position.

THE LARGE NEXUS

FINISHES: CHROME & BLACK

GAS FIRE POSITION: 760mm (W) x 405mm (D) x 230mm (H)

SOLID FUEL POSITION: 760mm (W) x 405mm (D) x 155mm (H)

PERIOD BASKETS

Our Period basket collection draws inspiration from various eras and styles. The Victorian and Queen Anne have a traditional luxurious feel and are equally suited to gas or solid fuel. The Cottage basket is versatile and timeless in its appeal, with a suitable mantel you can achieve either a modern or country cottage look. The Art Deco and Art Nouveau Voysey offer an interesting alternative, these beautifully made individual baskets certainly make a statement.

For log burning, the Kensington together with our range of Swans Nest baskets and Firedogs make the ideal choice. For further information on fuel choices for our whole range of Firebaskets please refer to the table on page 23.

Shelf: 56"



THE CASTLE *black*

MANTEL: CHISWICK 56" AGEAN LIMESTONE

SLIPS: SLATE

HEARTH: 54" SLATE

Shelf: 56"



THE QUEEN ANNE *highlight*

MANTEL: BELVEDERE 56" AGEAN LIMESTONE

SLIPS: GRANITE

HEARTH: 54" GRANITE



THE VOYSEY *highlight*
MANTEL: KINGSTON 63" CARRARA MARBLE
SLIPS: GRANITE
HEARTH: 60" SLABBED GRANITE FOR SOLID FUEL

Shelf: 55"



THE SMALL COTTAGE *polished side**

MANTEL: ASQUITH 55" AGEAN LIMESTONE

FASCIA: SHIRE NEWTON *highlight*

HEARTH: 54" SLATE

*COTTAGE BASKETS ARE REVERSIBLE WITH BLACK AND POLISHED SIDES

Shelf: 54"



THE LARGE COTTAGE *black side**

MANTEL: 54" PINE GRAND CORBEL

SLIPS: GRANITE

HEARTH: 54" SOLID FUEL SLABBED GRANITE

*COTTAGE BASKETS ARE REVERSIBLE WITH BLACK AND POLISHED SIDES

Shelf: 51"



THE 16" VALENCIA NO BACK *black*

MANTEL: BROMPTON 51" AGEAN LIMESTONE

SLIPS: GRANITE

HEARTH: 51" SLATE

Shelf: 54"



THE 18" VALENCIA WITH BACK *highlight*

MANTEL: RICHMOND 54" AGEAN LIMESTONE

SLIPS: GRANITE

HEARTH: 54" GRANITE

PERIOD BASKETS

Shelf: 56"



THE VICTORIAN *highlight*
MANTEL: CLARENDON 56" AGEAN LIMESTONE
SLIPS: SLATE
HEARTH: 54" SLATE

Shelf: 48"



THE ART DECO *polished*
MANTEL: PALMERSTON 48" CAST IRON *full polished*
FASCIA: SHIRE NEWTON *full polished*
HEARTH: 48" GRANITE

Shelf: 54"



THE 21" VALENCIA NO BACK *highlight*
MANTEL: 54" PINE DANESBURY
SLIPS: GRANITE
HEARTH: 54" GRANITE

Shelf: 50"



THE 16" CROMWELL *black*
MANTEL: LYON 50" AGEAN LIMESTONE
SLIPS: SLATE
HEARTH: 51" SLATE



THE SMALL COTTAGE *polished side**

MANTEL: WOBURN 54" AGEAN LIMESTONE

SLIPS: SLATE

HEARTH: 54" SLATE

CHAMBER: BLACK REEDED FIREBOARD

*COTTAGE BASKETS ARE REVERSIBLE WITH BLACK AND POLISHED SIDES

PERIOD BASKETS

Shelf: 50"



THE VOYSEY *highlight*
 MANTEL: LYON 50" AGEAN LIMESTONE
 SLIPS: SLATE
 HEARTH: 54" WATERFALL GRANITE

Shelf: 63"



THE KENSINGTON *black*
 MANTEL: KINGSTON 63" CARRARA MARBLE
 SLIPS: GRANITE
 HEARTH: 60" GRANITE

Shelf: 56"



THE 18" SWANS NEST *polished**
 WITH POLISHED REGENCY DOGS
 MANTEL: BROMPTON 56" CARRARA MARBLE
 SLIPS: GRANITE
 HEARTH: 54" GRANITE

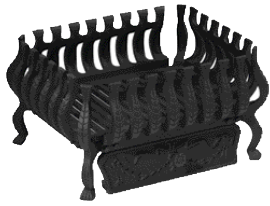
*SWANS NEST BASKETS ARE REVERSIBLE WITH BLACK AND POLISHED SIDES

Shelf: 63"



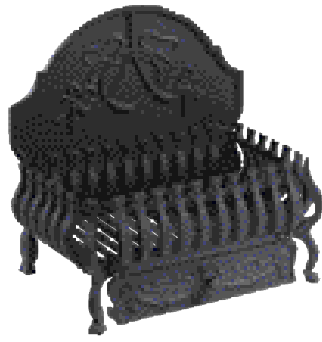
THE 24" SWANS NEST *polished**
 WITH POLISHED CELTIC DOGS &
 GEORGE AND DRAGON PLATE *REVERSED*
 MANTEL: KINGSTON 63" AGEAN LIMESTONE
 SLIPS: GRANITE HEARTH: 60" GRANITE

*SWANS NEST BASKETS ARE REVERSIBLE WITH BLACK AND POLISHED SIDES



THE 16" VALENCIA NO BACK

FINISHES: BLACK
400mm (W) x 330mm (D) x 220mm (H)



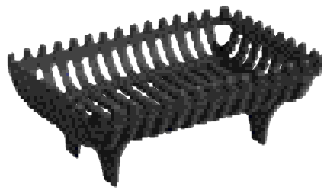
THE 18" VALENCIA SHOWN WITH BACK

FINISHES: HIGHLIGHT & BLACK
NO BACK: 470mm (W) x 335mm (D) x 220mm (H)
WITH BACK: 470mm (W) x 290mm (D) x 475mm (H)



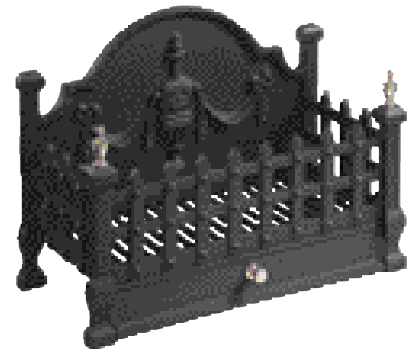
THE 21" VALENCIA SHOWN WITH BACK

FINISHES WITH BACK: BLACK
FINISHES WITHOUT BACK : HIGHLIGHT & BLACK
NO BACK: 550mm (W) x 330mm (D) x 220mm (H)
WITH BACK: 550mm (W) x 290mm (D) x 500mm (H)



THE CROMWELL 16" / 18"

FINISHES: BLACK
16" : 390mm (W) x 280mm (D) x 180mm (H)
18" : 455mm (W) x 320mm (D) x 180mm (H)



THE CASTLE

FINISHES: BLACK
570mm (W) x 280mm (D) x 440mm (H)



SWANS NEST 18"

FINISHES: REVERSIBLE POLISHED & BLACK
Shown with polished Regency Dogs
455mm (W) x 305mm (D) x 135mm (H)



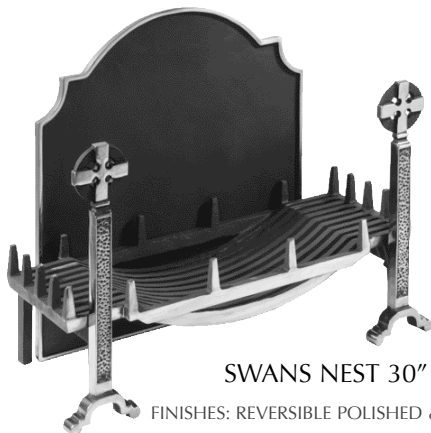
SWANS NEST 24"

FINISHES: REVERSIBLE POLISHED & BLACK
Shown black with black Art Nouveau Dogs
& reverse of the George and Dragon fireplate*
625mm (W) x 350mm (D) x 150mm (H)



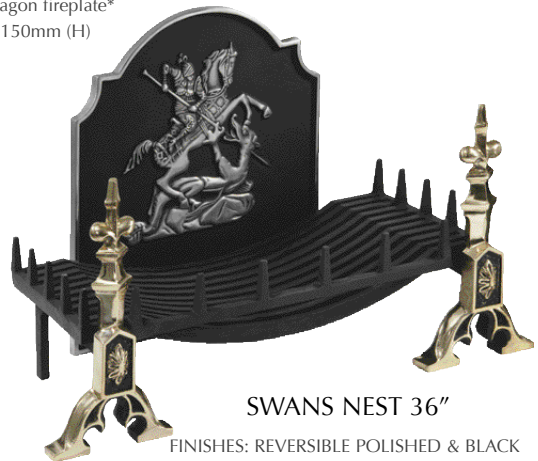
SWANS NEST 24"

FINISHES: REVERSIBLE POLISHED & BLACK
Shown with Chrome Sentinel dogs.



SWANS NEST 30"

FINISHES: REVERSIBLE POLISHED & BLACK
Shown with polished finish, polished Celtic Dogs
& reverse of the George and Dragon fireplate*
765mm (W) x 335mm (D) x 150mm (H)



SWANS NEST 36"

FINISHES: REVERSIBLE POLISHED & BLACK
Shown black with Antique brass finish Gothic Dogs
& George and Dragon fireplate*
920mm (W) x 410mm (D) x 170mm (H)

* The George and Dragon fireplate is reversible and freestanding. 610mm (W) x 660mm (H)

PERIOD BASKETS



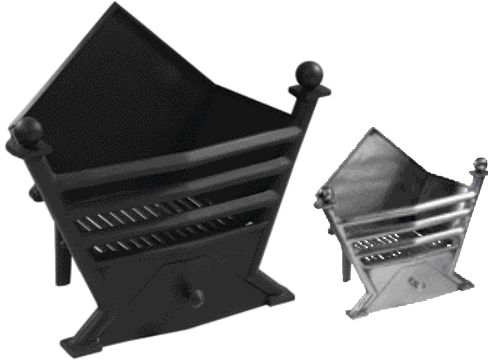
THE LARGE COTTAGE

FINISHES: REVERSIBLE POLISHED & BLACK
585mm (W) x 305mm (D) x 475mm (H)



THE SMALL COTTAGE

FINISHES: REVERSIBLE POLISHED & BLACK
485mm (W) x 305mm (D) x 365mm (H)



THE ART DECO

FINISHES: POLISHED & BLACK
545mm (W) x 245mm (D) x 475mm (H)



THE VOYSEY

FINISHES: HIGHLIGHT & BLACK
515mm (W) x 280mm (D) x 525mm (H)



THE KENSINGTON

FINISH: BLACK
695mm (W) x 320mm (D) x 635mm (H)



THE VICTORIAN

FINISHES: HIGHLIGHT & BLACK
505mm (W) x 315mm (D) x 510mm (H)



THE QUEEN ANNE

SHOWN IN HIGHLIGHT FINISH
590mm (W) x 285mm (D) x 580mm (H)



THE QUEEN ANNE

SHOWN IN BLACK FINISH
590mm (W) x 285mm (D) x 580mm (H)



THE QUEEN ANNE

SHOWN IN ANTIQUE BRASS FINISH
590mm (W) x 285mm (D) x 580mm (H)



SOLID FUEL TIGER

- Cast Iron Multifuel Stove
- 5.9kW output (anthracite)
- 545mm (W) x 595mm (H) x 325mm (D)
- Up to 10 hours burning with one fill
- Top or rear flued (6" Diameter)
- Airwash
- Large pyroceramic window
- Unique main body one piece construction
- Black and Chrome coloured handles included
- Long life Chrome steel fire bars
- Complies with EN 13240 April 1998 Class 3
- Adaptor kits available, Europa and Americana
- Cool-touch door handles
- Shown with black handle

GAS TIGER

- Cast Iron Gas Stove
- 4.25kW heat output to room (max)
- 545mm (W) x 595mm (H) x 365mm (D)
- 82% efficient
- Natural Gas or L.P.G options
- 'Clear view' flame picture
- Coal or log set options available
- Top flued (5" Diameter)
- Unique main body one piece construction
- Black and Chrome coloured handles included



THE TIGER AMERICANA

VARIATION ON THE TIGER STOVE
SUITABLE FOR SOLID FUEL ONLY
SHOWN WITH BLACK HANDLE



THE TIGER EUROPA

VARIATION ON THE TIGER STOVE
SUITABLE FOR SOLID FUEL ONLY
SHOWN WITH BLACK HANDLE

FIRE FOX SOLID FUEL STOVE



- Cast Iron Multifuel Stove
- 2 - 2.5 kW output (anthracite)
- 390mm (W) x 535mm (H) x 350mm (D)
- Top or rear flue (5"/125mm Diameter)
- Controlled Airwash
- Window: 250mm (W) x 200mm (H)
- De-ashing mechanism
- Burns coal, coke, wood, peat + smokeless fuels
- Construction conforms to EN 13240
- Supplied with mitten
- Black and chrome colour handles included



TIGER⁺ SOLID FUEL STOVE

- Cast Iron Multifuel Stove
- 6.9 kW output (anthracite)
- 550mm (W) x 650mm (H) x 340mm (D)
- Up to 10 hours burning with one fill
- Top or rear flue (6"/150mm Diameter)
- Controlled Airwash
- Large pyroceramic window
- Unique main body one piece construction
- Real firebrick lining
- Cool-touch door handles
- De-ashing mechanism
- Burns coal, coke, wood, peat + smokeless fuels
- Black and Chrome coloured handles included
- Can be fitted with or without legs
- Long life Chrome steel fire bars
- Construction conforms to EN 13240
- Adaptor kits available, Europa and Americana

Stoves are a fantastic source of heat for your home. The Firefox and the Tiger in all its variations offer a compact range of sizes and options for gas or multi fuel burning and are packed with features normally associated with more expensive models.

These stoves are manufactured to a high specification providing years of efficient heating and will look at home in both period and modern settings.

As variations to your Tiger Stove the Europa log store adds a modern and practical dimension, whilst the Americana provides rustic charm, as well as a useful warming surface. For more details on the Tiger stove range please refer to www.tigerstoves.com.



THE SOLID FUEL TIGER STOVE
SHOWN IN A BRICK BUILT COTTAGE FIREPLACE

ACCESSORIES



CATHEDRAL BUCKETS
Size dia: 228mm / 254mm / 330mm
Black x 3 Code: 1305



SALISBURY BUCKET
Size dia: 228mm
Black x 1 Code: 0322



SALISBURY BUCKET
Size dia: 228mm
Brass x 1 Code: 1300



SALISBURY BUCKET
Size dia: 228mm
Pewter x 1 Code: 1368



WATERLOO BUCKET
Size dia: 279mm
Black x 1 Code: 0327



WATERLOO BUCKET
Size dia: 279mm
Pewter x 1 Code: 0328



CRUSADE
Black single panel guard
609mm (H) x 609mm (W)
Code: 2022



CRUSADE
Black 3 panel guard
609mm (H) x 609mm (W)
x 177mm Panels Code: 2032



CRUSADE
Black curved guard
558mm (H) x 635mm (W)
x 127mm return Code: 2042



CRUSADE
Black shaped guard
584mm (H) x 533mm (W)
x 152mm return Code: 2052



CRUSADE
4 fold guard with black finish
635mm (H) x 229mm (W) Panels
Code: 2058



CAMBER
Black curved guard
Code 2065: 610mm (H) x 660mm (W)
Code 2067: 660mm (H) x 760mm (W)



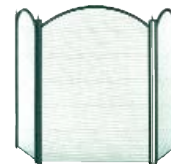
DYNASTY
Pewter 3 panel screen
660mm (H) x 431mm (W)
Code: 1228



DYNASTY
Antique 3 panel screen
660mm (H) x 431mm (W)
Code: 1795



DYNASTY
Brass 3 panel screen
660mm (H) x 431mm (W)
Code: 1794



DYNASTY
Black 3 panel screen
660mm (H) x 431mm (W)
Code: 1796



DYNASTY
Chrome 3 panel screen
660mm (H) x 431mm (W)
Code: 1227



DYNASTY
Pewter 4 panel screen
635mm (H) x 203mm (W) panels
Code: 1230



DYNASTY
Brass 4 panel screen
635mm (H) x 203mm (W) panels
Code: 1791



DYNASTY
Black 4 panel screen
635mm (H) x 203mm (W) panels
Code: 1771



VICTORIAN
Black / Pewter
406mm Tall, Code: 1103



VICTORIAN
Black
406mm Tall, Code: 1145



EMPRESS
Brass
406mm Tall, Code: 1116



MANOR
Black
558mm Tall, Code: 1065



MANOR
Black / Pewter
558mm Tall, Code: 1056



MANOR
Black / Brass
558mm Tall, Code: 1066



TEMPLE
Black
584mm Tall, Code: 1191



SMALL MERLIN
Black / Chrome
650mm Tall, Code: 1109



SMALL MERLIN
Pewter
650mm Tall, Code: 1108



VISCOUNT
Black
635mm Tall, Code: 1190



VISCOUNT
Pewter
635mm Tall, Code: 1195



ELIPSE
Black
540mm Tall, Code: 2105



ELIPSE
Pewter
540mm Tall, Code: 2109

STONE MANTEL SELECTION

Millions of years old yet timeless in appeal, real stone has long been a distinctive material for fireplace mantels. As these are natural products each one will be individual, please visit your local Gallery retailer to see samples of the real thing. For dimensions please refer to the table 3 on page 26.



AGEAN
LIMESTONE

CARRARA
MARBLE



GENOA 44"
Available in Agean Limestone



MILANO 48"
Available in Agean Limestone



HENLOW 48" & 54"
Available in Agean Limestone



PICCOLO 49"
Available in Agean Limestone



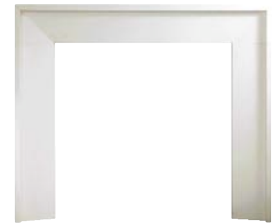
LYON 50"
Available in Agean Limestone



BROMPTON 51"
Available in Agean Limestone.



SIENNA 51" & 54"
Available in Agean Limestone



MARSEILLES 52"
Available in Agean Limestone

BROMPTON 56" & 60"
Available in Agean Limestone & Carrara Marble.



RICHMOND 54"
Available in Agean Limestone
& Carrara Marble.



WOBURN 54"
Available in Agean Limestone



ASQUITH 55"
Available in Agean Limestone



MODENA 55"
Available in Agean Limestone



CHISWICK 56"
Available in Agean Limestone
& Carrara Marble.



STOURHEAD 56"
Available in Agean Limestone



CLARENDON 56"
Available in Agean Limestone



BELVEDERE 56"
Available in Agean Limestone
& Carrara Marble.



KINGSTON 56" & 63"
Available in Agean Limestone
& Carrara Marble.

TABLE 1



CLASS 1

Commonly in older houses, earlier than 1960. The Class 1 chimney is identifiable by 7" (180mm) or greater diameter flue. The existing chimney must be structurally sound, please check before the installation of a new fireplace.



CLASS 2

Either an older house where the existing chimney has been lined by a proprietary steel flue or a newer house with a steel flue built in. This chimney type is identifiable by a 5" (130 mm) diameter flue and a steel flue terminal.



PRE-CAST FLUE

Modern houses generally later than 1960 often have a pre-cast concrete chimney system, identifiable by a rectangular box section flue and a terminal, as illustrated in the picture.



NO CHIMNEY

Modern houses often have no chimney. You can use a modern decorative electric fire, either with no heat for aesthetics or an efficient fire with up to 2kW heat output.

BASKET	SF	NG	LPG	REMOTE	NG	LPG	REMOTE	ELECTRIC WITH HEAT
ART DECO	✓	NG11	LPG11	✓	NG11	LPG11	✓	✓
ASTRA		✓	✓		✓	✓		
BARBICAN		✓	✓	✓	✓	✓	✓	
CANTILEVER	✓	NG12	LPG12	✓	NG12	LPG12	✓	✓
CASTLE	✓	NG22	LPG22	✓				✓
COTTAGE - SMALL	✓	NG33	LPG33		NG33	LPG33		
COTTAGE - LARGE	✓	NG26	LPG26					
CROMWELL 16"	✓							
CROMWELL 18"	✓							
CUBE		NG41	LPG41		NG41	LPG41		
ELAN NO BACK	✓	NG12	LPG12	✓	NG12	LPG12	✓	✓
ELAN WITH BACK	✓	NG12	LPG12	✓	NG12	LPG12	✓	✓
KENSINGTON	✓	NG7	LPG7		NG7	LPG7		
KRYPTON	✓	NG22	LPG22	✓				✓
LIBERTY		✓	✓					
MATRIX	✓	NG14	LPG14	✓				✓
NEON NO BACK	✓	NG23	LPG23	✓	NG23	LPG23	✓	✓
NEON WITH BACK	✓	NG23	LPG23	✓	NG23	LPG23	✓	✓
NEXUS - SMALL	✓	NG12	LPG12	✓	NG12	LPG12	✓	
NEXUS - LARGE	✓	NG12	LPG12	✓	NG12	LPG12	✓	
PULSE		✓	✓		✓	✓		
QUEEN ANNE	✓	NG30	LPG30		NG30	LPG30	✓	✓
SWANS NEST 18"	✓	NG21	LPG21	✓				
SWANS NEST 24"	✓	NG15	LPG15	✓				
SWANS NEST 30"	✓	NG29	LPG29	✓				
SWANS NEST 36"	✓	NG16	LPG16	✓				
SYMPHONY		✓	✓	✓	✓	✓	✓	
VALENCIA 16" NO BACK	✓	NG23	LPG23	✓	NG23	LPG23	✓	✓
VALENCIA 18" NO BACK	✓	NG12	LPG12	✓	NG12	LPG12	✓	✓
VALENCIA 18" WITH BACK	✓	NG12	LPG12	✓	NG12	LPG12	✓	✓
VALENCIA 21" NO BACK	✓	NG14	LPG14	✓				✓
VALENCIA 21" WITH BACK	✓	NG12	LPG12	✓				✓
VICTORIAN	✓	NG31	LPG31	✓	NG31	LPG31	✓	✓
VOYSEY	✓	NG20	LPG20		NG20	LPG20		
ZEN		✓	✓	✓	✓	✓	✓	
STOVES								
TIGER	✓	✓						
AMERICANA COOK TOP	✓							
EUROPA - LOG STORE	✓							
TIGER +	✓							
FIRE FOX	✓							

CHOOSING A FIRE BASED ON THE TYPE OF CHIMNEY IN YOUR HOME

STEP ONE: Identify the chimney type of your house. *(From Table 1 opposite).*

STEP TWO: Decide on the type of fire that would suit your chimney and your preferred source of fuel or energy. Ensure that the fire can be matched with your chosen basket.

More information on how to choose a suitable basket, mantel and slip set can be found on pages 25-26. We would strongly recommend that you consult with your Gallery retailer if you have any queries regarding product selection and fitting issues. As a minimum, please ensure that you have a survey carried out by your retailer before placing your order.

DECORATIVE GAS FIRES (DGF)

Generally, this type of fire will provide limited heating and should be relied upon for the visual effect only rather than as a source of heat. Many of our fires have a choice of ceramic fuel as can be seen below. For information, NG 14 is the reference number for the natural gas (NG) fire to suite the Matrix for example, in the same way that LPG14 is the reference number for the Liquid Petroleum Gas (LPG) version.



PEBBLES



COAL



FIREWOOD



DRIFTWOOD



CHARCOAL

ELECTRIC BASKET FIRES

Should you prefer to install a fire basket with an electric fire or you do not have a chimney but would like to use a firebasket, then please check the selection charts to see which firebaskets can be provided with an electric fire option. These can provide up to 2kW heating. When used for heating, the ash pan cover must be removed.



BURNING SOLID FUEL

With the upsurge in solid fuel burning we are delighted to say that most of our baskets can be used for solid fuel. However, in accordance with the Clean Air Act, it is your responsibility to burn smokeless fuel if you live in a "smoke free" zone. Please note that when using a basket with solid fuel its finish should be specified as black as polished surfaces may discolour locally with the heat. Please check the selection grid (Table 1 opposite) as some of our firebaskets are suitable for gas only.

TABLE 1 KEY - TYPES OF FIRE

SF - Solid fuel (coal, logs and coal briquettes). Class 1 chimney only.

NG - Natural gas. Available for all chimney types.

LPG - Liquid Petroleum Gas. Bottled gas if natural gas is not available.

REMOTE - Optional Infra-red remote control. Available for most Class 1 and 2 gas fires.

ELECTRIC WITH HEAT - Decorative fire with up to 2kW heat output.

TABLE 2 BASKETS	PAGE	FINISHES AVAILABLE	SIZE		
			WIDTH (A)	DEPTH(B)	HEIGHT(C)
ART DECO	14, 18	POLISHED & BLACK	545mm 21.5"	245mm 9.6"	475mm 18.7"
ASTRA	2, 7, 10	CHROME	430mm 16.9"	225mm 8.9"	290mm 11.4"
BARBICAN	7, 8, 10	CHROME	395mm 15.6"	315mm 12.4"	305mm 12.0"
CANTILEVER	6, 9	HIGHLIGHT	555mm 21.9"	245mm 9.6"	320mm 12.6"
CASTLE	11, 17	BLACK	570mm 22.4"	280mm 11.0"	440mm 17.3"
COTTAGE - SMALL	13, 15, 18	POLISHED & BLACK reversible	485mm 19.1"	305mm 12.0"	365mm 14.4"
COTTAGE - LARGE	13, 18	POLISHED & BLACK reversible	585mm 23.0"	305mm 12.0"	475mm 18.7"
CROMWELL 16"	14, 17	BLACK	390mm 15.4"	280mm 11.0"	180mm 7.1"
CROMWELL 18"	17	BLACK	455mm 17.9"	320mm 12.6"	170mm 6.7"
CUBE	7, 10	CHROME	265mm 10.4"	265mm 10.4"	265mm 10.4"
ELAN NO BACK	3, 9	POLISHED & BLACK	440mm 17.3"	300mm 11.8"	210mm 8.3"
ELAN WITH BACK	3, 9	POLISHED & BLACK	455mm 17.9"	300mm 11.8"	385mm 15.2"
KENSINGTON	16, 18	BLACK	695mm 27.4"	320mm 25.0"	635mm 25.0"
KRYPTON NO BACK	9	POLISHED & BLACK	535mm 21.1"	230mm 9.1"	190mm 7.5"
KRYPTON WITH BACK	4, 9	POLISHED & BLACK	535mm 21.1"	230mm 9.1"	235mm 9.3"
LIBERTY	4, 10	CHROME	570mm 22.4"	410mm 16.1"	365mm 14.4"
MATRIX	4, 9	POLISHED & BLACK	515mm 20.3"	300mm 11.8"	395mm 15.6"
NEON NO BACK	3, 9	POLISHED & BLACK	375mm 14.8"	285mm 11.2"	190mm 7.5"
NEON WITH BACK	3, 9	POLISHED & BLACK	375mm 14.8"	285mm 11.2"	230mm 9.1"
NEXUS - SMALL (SOLID FUEL)	10	CHROME & BLACK	610mm 24.0"	315mm 12.4"	120mm 7.5"
NEXUS - SMALL (GAS FIRE)	6, 10	CHROME & BLACK	610mm 24.0"	315mm 12.4"	190mm 7.5"
NEXUS - LARGE (SOLID FUEL)	10	CHROME & BLACK	760mm 29.9"	405mm 15.9"	255mm 9.1"
NEXUS - LARGE (GAS FIRE)	6, 10	CHROME & BLACK	760mm 29.9"	405mm 15.9"	230mm 9.1"
PULSE	7, 10	CHROME	455mm 17.9"	285mm 11.2"	250mm 9.8"
QUEEN ANNE	11, 18	HIGHLIGHT , ANTIQUE BRASS & BLACK	590mm 23.2"	285mm 11.2"	580mm 22.8"
SWANS NEST 18"	16, 17	POLISHED & BLACK reversible	455mm 17.9"	305mm 12.0"	135mm 5.3"
SWANS NEST 24"	16, 17	POLISHED & BLACK reversible	625mm 24.6"	350mm 13.8"	150mm 5.9"
SWANS NEST 30"	17	POLISHED & BLACK reversible	765mm 30.1"	335mm 13.2"	150mm 5.9"
SWANS NEST 36"	17	POLISHED & BLACK reversible	920mm 36.2"	410mm 16.1"	170mm 6.7"
SYMPHONY	5, 6, 10	HIGHLIGHT	510mm 20.1"	255mm 10.0"	215mm 8.5"
VALENCIA 16" NO BACK	13, 17	BLACK	400mm 15.7"	330mm 13.0"	220mm 8.7"
VALENCIA 18"NO BACK		HIGHLIGHT & BLACK	470mm 18.5"	335mm 13.2"	220mm 8.7"
VALENCIA 18" WITH BACK	13, 17	HIGHLIGHT & BLACK	470mm 18.5"	290mm 11.4"	475mm 18.7"
VALENCIA 21"NO BACK	14	HIGHLIGHT & BLACK	550mm 21.7"	330mm 13.0"	220mm 8.7"
VALENCIA 21" WITH BACK	17	BLACK	550mm 21.7"	290mm 11.4"	500mm 19.7"
VICTORIAN	14, 18	HIGHLIGHT & BLACK	505mm 19.9"	315mm 12.4"	510mm 20.1"
VOYSEY	12, 16, 18	HIGHLIGHT & BLACK	515mm 20.3"	280mm 11.0"	525mm 20.7"
ZEN WITH BACK	10	CHROME & BLACK	495mm 19.5"	375mm 14.8"	240mm 9.4"
ZEN NO BACK	4	CHROME & BLACK	495mm 19.5"	375mm 14.8"	140mm 5.5"
STOVES					
TIGER	19, 20	BLACK	545mm 21.5"	365mm 14.4"	595mm 23.4"
AMERICANA COOK TOP	19	BLACK	810mm 31.9"	335mm 13.2"	595mm 23.4"
EUROPA - LOG STORE	19	BLACK	510mm 20.1"	335mm 13.2"	790mm 31.1"
TIGER +	19	BLACK	550mm 21.7"	340mm 13.4"	650mm 25.6"
FIRE FOX	19	BLACK	390mm 15.4"	350mm 13.8"	535mm 21.1"
FIRE DOGS					
ART NOUVEAU	17	HIGHLIGHT & BLACK	400mm 15.7"	125mm 4.9"	365mm 14.4"
CELTIC DOGS	17	HIGHLIGHT & BLACK	520mm 20.5"	145mm 5.7"	395mm 15.6"
GOTHIC DOGS	17	HIGHLIGHT , ANTIQUE BRASS & BLACK	485mm 19.1"	255mm 10.0"	425mm 16.7"
REGENCY DOGS	17	HIGHLIGHT , ANTIQUE BRASS & BLACK	400mm 15.7"	200mm 7.9"	385mm 15.2"
SENTINEL DOGS	17	CHROME & BLACK	375mm 14.8"	125mm 4.9"	445mm 17.5"

All dimensions are \pm 12mm.

BASKET & MANTEL SELECTION

TABLE 3	MANTEL SIZES						
	A	B	C	D	E	F	G
STONE	55.3"	48.6"	36.0"	36.0"	48.6"	8.5"	2.8"
	55.9"	44.7"	36.0"	36.0"	51.8"	10.2"	3.0"
	51.0"	43.7"	34.1"	35.0"	47.0"	7.9"	2.8"
	55.9"	113.5"	36.0"	36.0"	52.6"	7.9"	2.8"
	60.0"	45.7"	38.0"	36.6"	56.1"	7.9"	2.8"
	55.9"	44.1"	36.0"	36.0"	51.4"	9.1"	2.8"
	55.9"	44.7"	36.0"	36.0"	52.6"	7.9"	2.8"
	44.1"	40.0"	32.1"	33.1"	44.1"	4.9"	1.0"
	48.0"	43.3"	32.1"	35.0"	45.1"	7.9"	1.0"
	53.9"	44.3"	36.0"	36.0"	49.0"	7.9"	1.0"
	55.9"	44.7"	36.0"	36.0"	51.8"	10.2"	3.0"
	63.0"	48.6"	39.6"	39.6"	59.1"	10.2"	3.0"
	49.2"	42.3"	32.1"	33.1"	44.1"	7.5"	1.0"
	51.8"	43.9"	36.0"	36.0"	51.8"	7.5"	2.8"
	48.0"	42.9"	32.1"	33.1"	48.0"	5.9"	3.0"
	55.3"	44.7"	36.0"	36.0"	48.6"	8.5"	2.8"
	48.6"	42.3"	36.0"	36.0"	48.6"	5.1"	2.8"
	53.9"	45.7"	36.0"	36.0"	49.6"	8.7"	2.8"
	51.0"	42.7"	34.1"	34.1"	47.0"	7.9"	2.8"
	53.9"	44.3"	34.1"	34.1"	50.0"	7.9"	2.8"
55.9"	44.7"	36.0"	36.0"	52.6"	9.1"	2.8"	
53.9"	45.5"	34.1"	36.0"	50.0"	7.9"	2.8"	
TIMBER	42"	43.5"	28.0"	33.5"	39.0"	8.7"	1.0/3.0"
	48"	46.5"	34.1"	36.0"	45.1"	8.5"	1.0/3.0"
	54"	47.0"	36.0"	36.0"	49.6"	8.5"	1.0/3.0"
	54"	46.3"	35.4"	35.4"	49.0"	7.5"	1.0/3.0"
	54"	46.5"	36.0"	36.0"	49.6"	8.5"	1.0/3.0"
	53"	47.0"	36.0"	36.0"	49.8"	7.0"	1.0/3.0"
	48"	44.5"	33.1"	35.0"	45.1"	7.1"	1.0/3.0"
	54"	45.5"	36.0"	36.0"	49.0"	7.1"	1.0/3.0"
	44"	40.9"	28.5"	32.5"	39.6"	5.9"	1.0"
	54"	46.5"	36.0"	36.0"	49.0"	7.5"	1.0/3.0"
CAST IRON	48.0"	49.8"	31.1"	35.0"	43.5"	10.2"	3.0"
	53.9"	50.0"	36.0"	36.0"	48.0"	10.2"	3.0"

CHOOSING A BASKET

STEP ONE: []

STEP TWO: []

STEP THREE: []

CHOOSING A MANTEL TO SURROUND A BASKET

STEP ONE: []

STEP TWO: []

STEP THREE: []

STEP FOUR: []

* The assembly of these mantels in Table 3 offer a small amount of flexibility on the opening width (DIMENSION C) of approximately ± 50 mm. Whatever dimension C is adjusted by, dimension E has to be adjusted by the same amount. Dimension E is the distance measured between the outside of the mantel legs.

TABLE 2 - BASKET & STOVE SIZES KEY

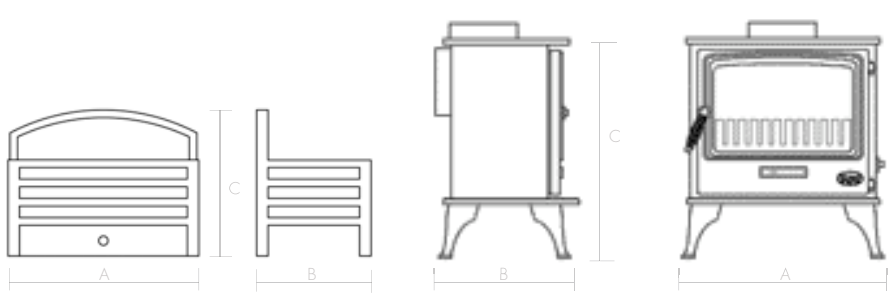
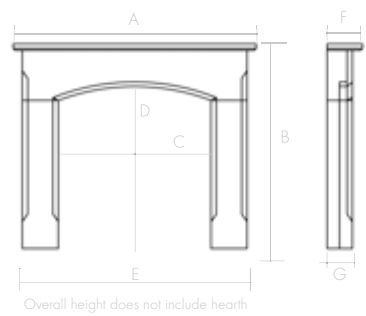


TABLE 3 - MANTEL SIZES KEY



A FOCUS ON SERVICE FOR YOUR PEACE OF MIND

The following information has been compiled to help you make your choice of fireplace an easy one. This is likely to be one of the more expensive alterations you make to your home and we hope that with the following information it will be an alteration you will be pleased with for years to come.

1. REASSURANCE BEFORE YOU CHOOSE YOUR GALLERY FIREPLACE.

All cast iron products are manufactured in ISO 9002 accredited manufacturing facilities.

All the gas fires we supply are tested in accordance with CE requirements and are CE marked.

Each stone mantel is inspected upon delivery to your retailer.

Due to the manufacturing processes all measurements are approximate and may vary slightly so allow for a tolerance of plus or minus 12mm.

In order to achieve some of the colour options, we plate the products using a variety of manufacturing processes. When we state that a product is "Antique Brass finish" or "Chrome finish" there is no intention to mislead. The products are not brass or chrome respectively, they are simply plated to give that effect.

Polished Cast Iron and plated products are not recommended for solid fuel fires as some local discolouration may occur. Occasionally this process, which does not affect the serviceability of the product, may also occur with gas fires. If a slight local change in colour will cause distress, it is strongly recommended that black products are selected.

The colours shown in the brochures are as accurate as possible, but if the colour you require is critical then please consult your retailer before basing all your decisions on the colours shown here.

Please also note that shading and crazing are characteristics of the glazed tiles used in tiled inserts and tiled hearths.

Your home may have a chimney type which will allow you to choose any of the fireplaces shown in the brochures. However, please consult the selection charts in the brochures and if you are not clear please consult your CORGI or HETAS registered installer or your retailer.

Generally the gas or electric fires are for decorative purposes only and should not be relied upon as a heat source. The "no-chimney" options have power flue and electric fires available which do provide some heating to the room.

Gas fires with a gas input of 6.9kW or less do not normally require air vents there are some circumstance where vents may be required. This is determined by your installer carrying out a spillage test during the commissioning process, or if your chosen fire has a gas input greater than 6.9kW. Please ask your retailer for further information.

There are occasions when designs, or products are altered or discontinued without prior notice (a reserved right), so if you are about to set your heart on a particular fireplace, please consult your retailer before making that final commitment.

2. REASSURANCE BEFORE YOU COMMIT TO THE INSTALLATION OF YOUR GALLERY FIREPLACE.

It is a major project to have a new fireplace installed and it is good practice to try and prepare yourself as well as possible.

All installations must be carried out in accordance with the requirements set out in the Building Regulation documents, in particular, Approved Document J. There are independent bodies which have been approved to carry out installations in accordance with these regulations. For gas installations the most recognised independent body is CORGI and for solid fuel installations it is HETAS. Please confirm with your retailer that your new fireplace will be installed appropriately. If you have your new fireplace fitted by a CORGI (gas) or HETAS (solid fuel) registered fitter you will be given a certificate stating that your installation has been carried out in accordance with the Building Regulations. If you do not have one of these certificates then you will have to arrange for your local Building Control Officer to inspect your installation and approve it.

Whilst there appear to be no definitive regulations available, a sufficient gap must be provided around the basket when placed inside the fire chamber. This is essential because air must be able to flow into the fire in order for the fuel to burn effectively; the flue and fire chamber surfaces must be kept cool to avoid heat damage from the fire and where applicable gas controls need to be freely accessible.

Your Gallery fireplace is made up of a number of different components and it is important to ensure that your installer not only meets the requirements above, but that he also has the necessary experience to fit ALL those components, for example a stone mantel.

In the unlikely event that there is a defect in any of the products shown in this brochure, then a replacement will be supplied without hesitation. Of course, this requires the products to be fully inspected prior to installation as no responsibility for re-fitting or redecoration can be accepted if defective products have been installed. In this case and in the case of accidental damage after installation, in-situ repairs can be made by specialists, subject to prior agreement of terms with your retailer.

3. UNDERSTANDING YOUR NEW GALLERY FIREPLACE, ITS AFTERCARE AND MAINTENANCE.

LIMESTONE

Limestone products, once installed and dry should be cleaned and sealed using Lithofin Power-Clean and Stain-Stop, or similar. Some limestone products are delivered pre-sealed in order to minimise any marks created during fitting. Your installer should carry out the initial sealing where applicable. Further sealing should not be necessary.

The stone mantels pictured are manufactured from 100% natural material. As such the mantel you will purchase will be unique due to the very slight variations in fossil formation, veining and colour. This is one of the great attractions of 100% pure natural products.

Please be aware that small fossils and variations in the limestone are part and parcel of this wonderful natural product.

MARBLE

Marble products may have small amounts of colour-matched filler to give the impression of a continuous surface. The nature of marble is such that when it is formed in the earth, some small cracks are created too. The marble that is selected for the mantels shown in this brochure has been chosen to provide affordable quality, thus some minor cracks have been permitted. To achieve a perfect piece of marble with no imperfections at all means a huge amount of wastage. This has two principal effects, the product becomes prohibitively expensive and the natural resources are depleted too quickly - a much more harmful approach to the world's environment.

CAST IRON

All the cast iron products are delivered with a protective, oil-based coating on polished surfaces. This should be cleaned off during installation. It is recommended that a spray-type oil is applied from time to time in order to avoid surface rust appearing. Ensure that the room in which the cast iron product is being installed is thoroughly dry. For example recently plastered walls cause high levels of moisture in the atmosphere and, as a result, rust is almost inevitable.

Under no circumstances should a water-based cleaner or polish be used to clean cast iron products.

Firebaskets are more prone to moisture from your chimney dropping onto their exposed surfaces. This is likely to cause corrosion, even to plated cast iron products. To minimise this it is recommended to have your chimney thoroughly swept clean and to seek the advice of your retailer regarding the installation of a chimney cowl.

When using ceramic fuel, ensure that these do not touch any of the polished surfaces as this will help to minimise the possibility of thermal discolouration.

When using gas fires, the products of combustion can sometimes cause white deposits to form. These deposits can usually be removed with a soft brush.

When using cast iron products in a solid fuel application only burn small fires initially. This will temper the cast iron.

High temperature paint is used on the black and graphite products where fires will burn. This paint will eventually burn off. A proprietary, high temperature paint can be used to recoat your fireplace. Such paint is available from your retailer.

There are some very high temperature burning fuels which can cause damage to any fireplace. Please refer to the Solid Fuel Association (www.solidfuel.co.uk) recommendations and use an approved coal merchant as your supplier. No responsibility can be accepted if high temperature fuels have been purchased from an unapproved source.

Clean ash away regularly as a build up beneath the fire will cause the grate to burn out quickly. The grate is a consumable part of your fire and will need replacement from time to time, depending on the frequency and burning temperature of your fires.

GAS FIRES

A gas fire is a technical piece of equipment and, just like a gas boiler needs regular servicing. Please ensure that you have your gas fire serviced regularly by a CORGI registered installer. This will help you enjoy safe and trouble free enjoyment of your fireplace for years to come and may be a requirement of the Government's proposed Home Information Pack, due to become a legal requirement in June 2007.



THE
GALLERY
COLLECTION



DEALER STAMP



www.galleryfireplaces.co.uk